

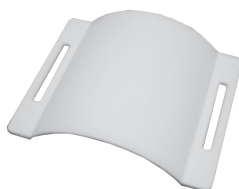
This stand is used to fix the BPW-05L (sold separately).

Be sure to read this manual before using this product to ensure safe use over a long period of time.

Items Included:

Check the contents of this package.

- (1) Stand -----1
- (2) Plate folder -----2
- (3) Sucker -----1
- (4) Rubber feet -----4
- (5) Instruction manual (this document) -----1



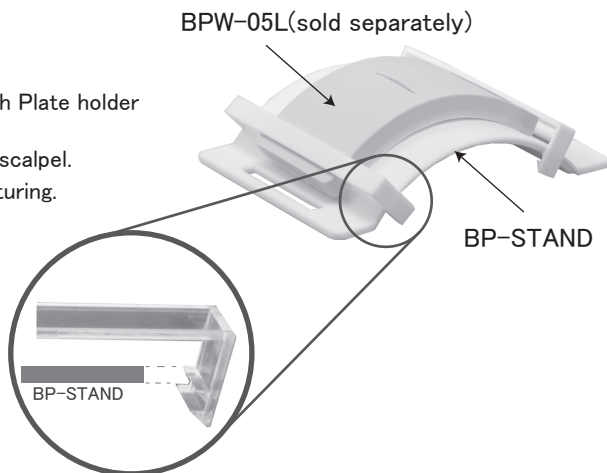
Stand



Plate folder

Directions for Use:

- (1) Put BPW-05L on BP-STAND
- (2) Secure BPW-05L to BP-STAND with Plate holder
- (3) Cut the surface of BPW-05L with a scalpel.
The wound will open, so practice suturing.



Precautions for Use:

- (1) Do not press hard. BP-STAND may break.
- (2) There are 4 rubber feet to prevent slipping, but please note that the rubber feet may come off if you slide it sideways with a strong force.
- (3) If the user deeply scratches the suture training plate with a scalpel, this product may be scratched.